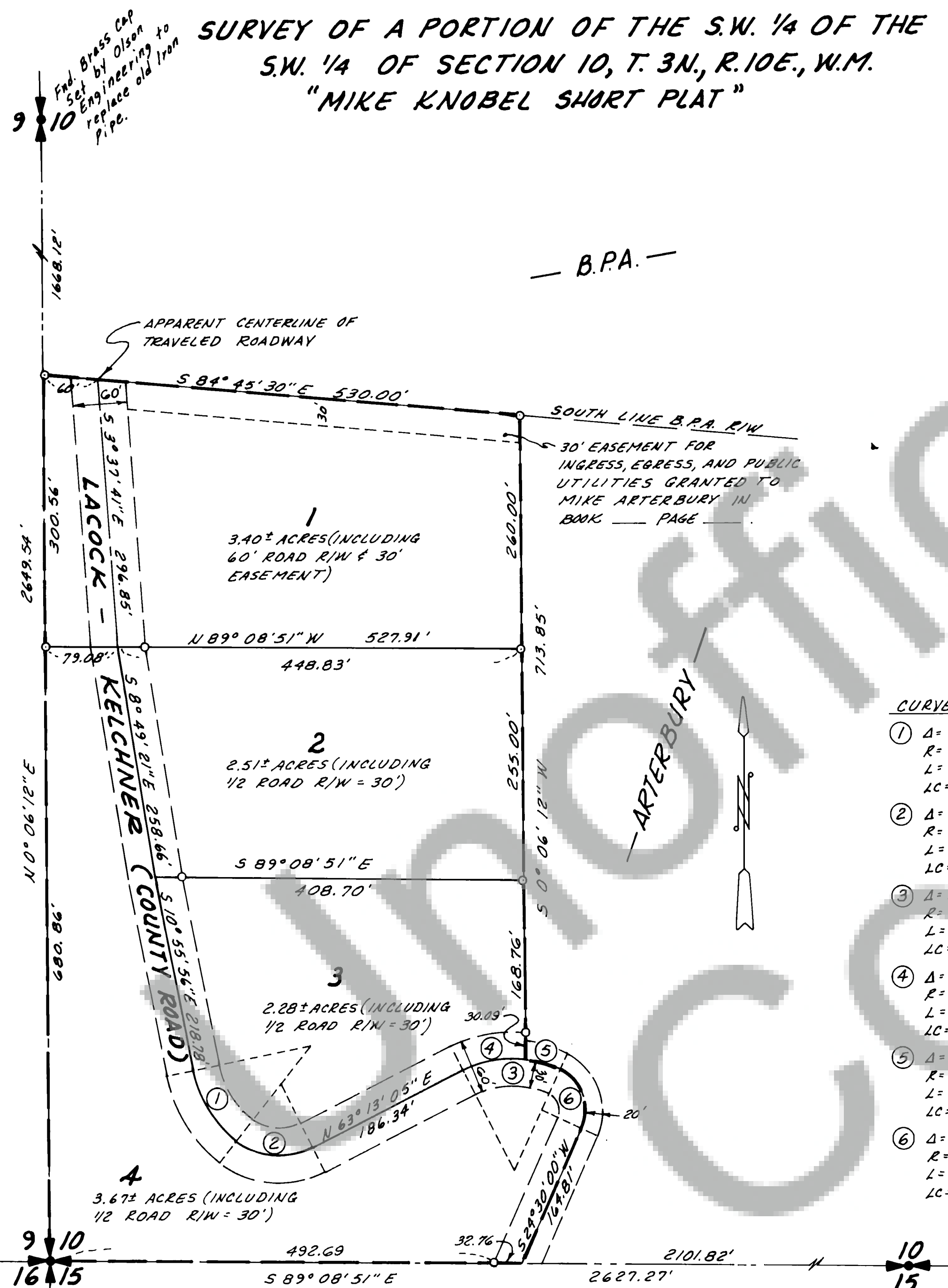


91950

SURVEY OF A PORTION OF THE S.W. 1/4 OF THE S.W. 1/4 OF SECTION 10, T. 3N., R. 10E., W.M. "MIKE KNOBEL SHORT PLAT"



CURVE DATA

- ① Δ = 39° 55' 13"
R = 132.50'
L = 92.32'
LC = 90.46'
- ② Δ = 65° 55' 46"
R = 80.00'
L = 92.06'
LC = 87.06'
- ③ Δ = 51° 16' 55"
R = 125.00'
L = 111.88'
LC = 108.18'
- ④ Δ = 31° 53' 18"
R = 125.00'
L = 69.57'
LC = 68.68'
- ⑤ Δ = 19° 23' 37"
R = 125.00'
L = 42.31'
LC = 42.11'
- ⑥ Δ = 90° 00' 00"
R = 50.00'
L = 78.54'
LC = 70.71'

SURVEYOR'S CERTIFICATE

This map correctly represents a survey made by me or under my direction in conformance with the requirements of the Survey Recording Act at the request of MR. MIKE KNOBEL in JULY 1980.

John G. Lawson
Professional Land Surveyor

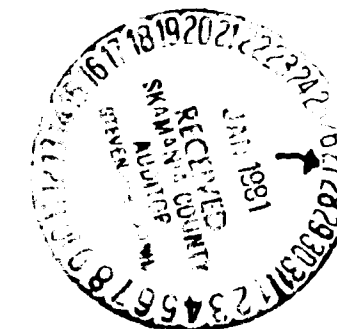


91950

AUDITOR'S CERTIFICATE

Filed for record this 27th day of Jan 1981 at 1:00 P. M.
in Book 1 of Surveys at Page 270 at the request of LAWSON LAND SURVEYING

T. Salvesen
County Auditor



LEGEND

- FOUND MONUMENT AS SHOWN
- SET 1/2" I.R. PLASTIC CAP

Find Brass Cap set by Olson Engineering @ Fence Corner

Find Skomania County Brass Cap @ Fence Corner

LAWSON LAND SURVEYING
Y-PLAZA 11612-A 4th PLAIN RD.
VANCOUVER, WASHINGTON 98662
PHONE 1-(206)-256-8008

SCALE: 1" = 100' DRAWN BY: K.L.F. JOB No. 980100310
DATE: Jan 1981 CHECKED BY: _____ SHEET _____ OF _____

Book 1 / Surveys Page 270