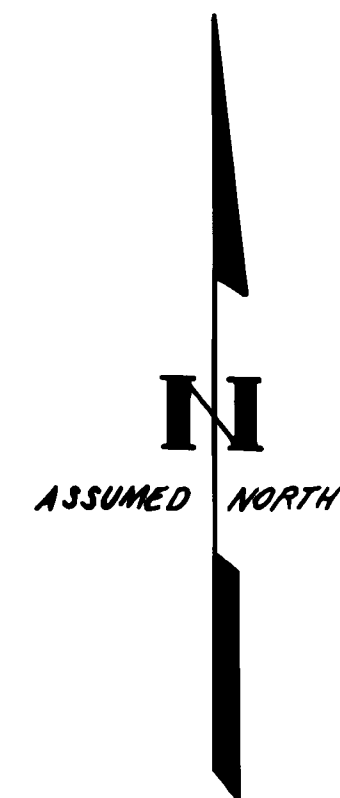


SURVEY OF
A PORTION OF
NE 1/4, NE 1/4, SEC. 36,
T3N, R8E, W.M.

NOTE:

THE MONUMENTS WERE SET IN RELATION TO THE EXISTING SECTION CORNER AND QUARTER CORNER AND THEY MAY OR MAY NOT REPRESENT THE TRUE LOCATION OF THE PROPERTY CORNER. THIS AREA IS A VERY ACTIVE SLIDE AREA AND THE EXISTING MONUMENTS AND GROUND HAVE MOVED 90 FEET MORE OR LESS IN THE LAST 7 TO 8 YEARS. THE MONUMENTS WERE SET AT THE REQUEST OF THE PROPERTY OWNERS AND WERE SET ASSUMING THE SECTION CORNER AND QUARTER CORNER MONUMENTS WERE IN THEIR ORIGINAL POSITIONS.



DEED REFERENCE:

GRANTOR: THERESA H. WHITELEY
GRANTEE: EDWARD M. SCRIVEN
DATE: MAY 28, 1974
RECORDED IN BK. 66, PG. 782



Jerry Olson

8/15/80 91123

SURVEYOR'S CERTIFICATE

This map correctly represents a survey made by me or under my direction in conformance with the requirements of the Survey Recording Act at the request of

EDWARD SCRIVEN

in JUNE 1980

Jerry Olson
Jerry C. Olson - 9025

AUDITOR'S CERTIFICATE

Filed for record this 17th day of Aug 1980 at 1:00 P. M.

in Book 1 of SURVEYS at page 254 at the request of

JERRY C. OLSON

J. Neufeld
Deputy County Auditor

FND CORPS OF ENGR BRASS CAP BADLY DISTURBED. WE REPLACED IT WITH A 1" IRON PIPE WITH BRASS CAP. WE FOUND THE 30' D.T. THE COUNTY SURVEYOR SCRIBED IN 1912. THIS D.T. DOESN'T MATCH THE BEARING AND DISTANCE FROM THE B.T. BUT THEY APPEAR TO BE MOVING INDEPENDENTLY FROM EACH OTHER IN THE SLIDE. THIS IS PROBABLY NOT THE TRUE LOCATION OF THE QUARTER CORNER.

36 * 31 SET 1" IRON PIPE WITH BRASS CAP
R.P.S.
N 72° E, 15.30';
R.P. SPIKE IN 6" FIR
W/TAG & 3 BLAZES
N 32° E, 15.30';
R.P. SPIKE IN 8" OAK
W/TAG & 3 BLAZES
S 21° E, 32.36';
OLD BEARING TREE
W/BLAZE & SCRIBING
S 80° W, 57.70';
R.P. SPIKE IN 10" FIR
W/TAG & 3 BLAZES
N 80° W, 23.09'

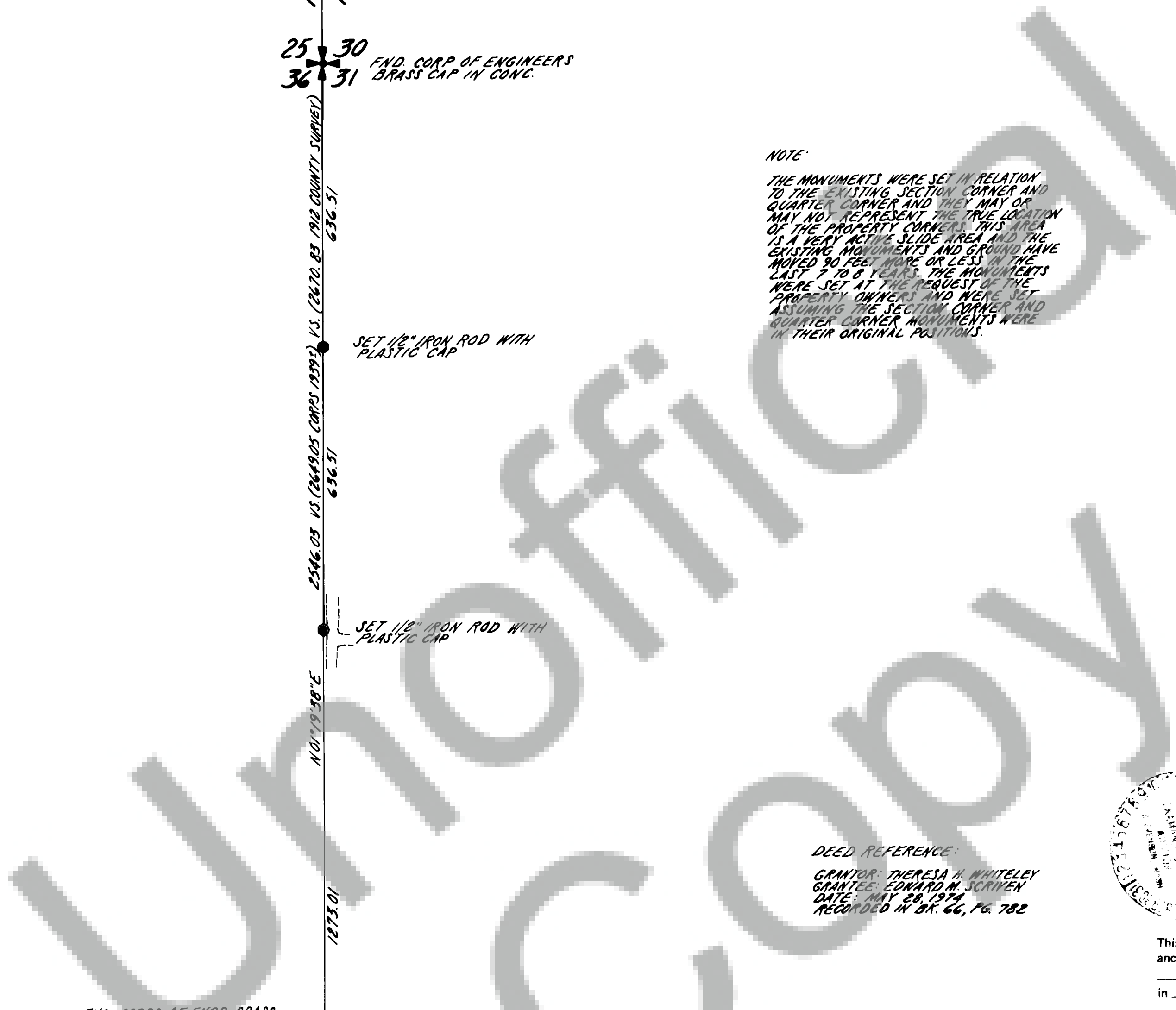
SET 1/2" IRON ROD WITH PLASTIC CAP

SET 1/2" IRON ROD WITH PLASTIC CAP

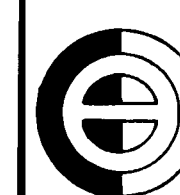
R8E
R9E

25 * 30
36 * 31 FND CORP OF ENGINEERS BRASS CAP IN CONC.

127301
N 01° 19' 30" E
2546.03 VS. (264905 CORPS 1859) VS. (2670.83 1912 COUNTY SURVEY)
636.51
636.51



Book 1 Surveys Page 254



OLSON ENGINEERING
1111 BROADWAY, VANCOUVER, WASH.
PH. (206) - 695-1385
1 KANAKA CR. RD., STEVENSON, WASH.
PH. (509) - 427-8411

Scale 1" = 200' Date 6/80
Job No 2572 Calc By BT
Drawn By RL
Checked By RL
Sheet 1 of 1