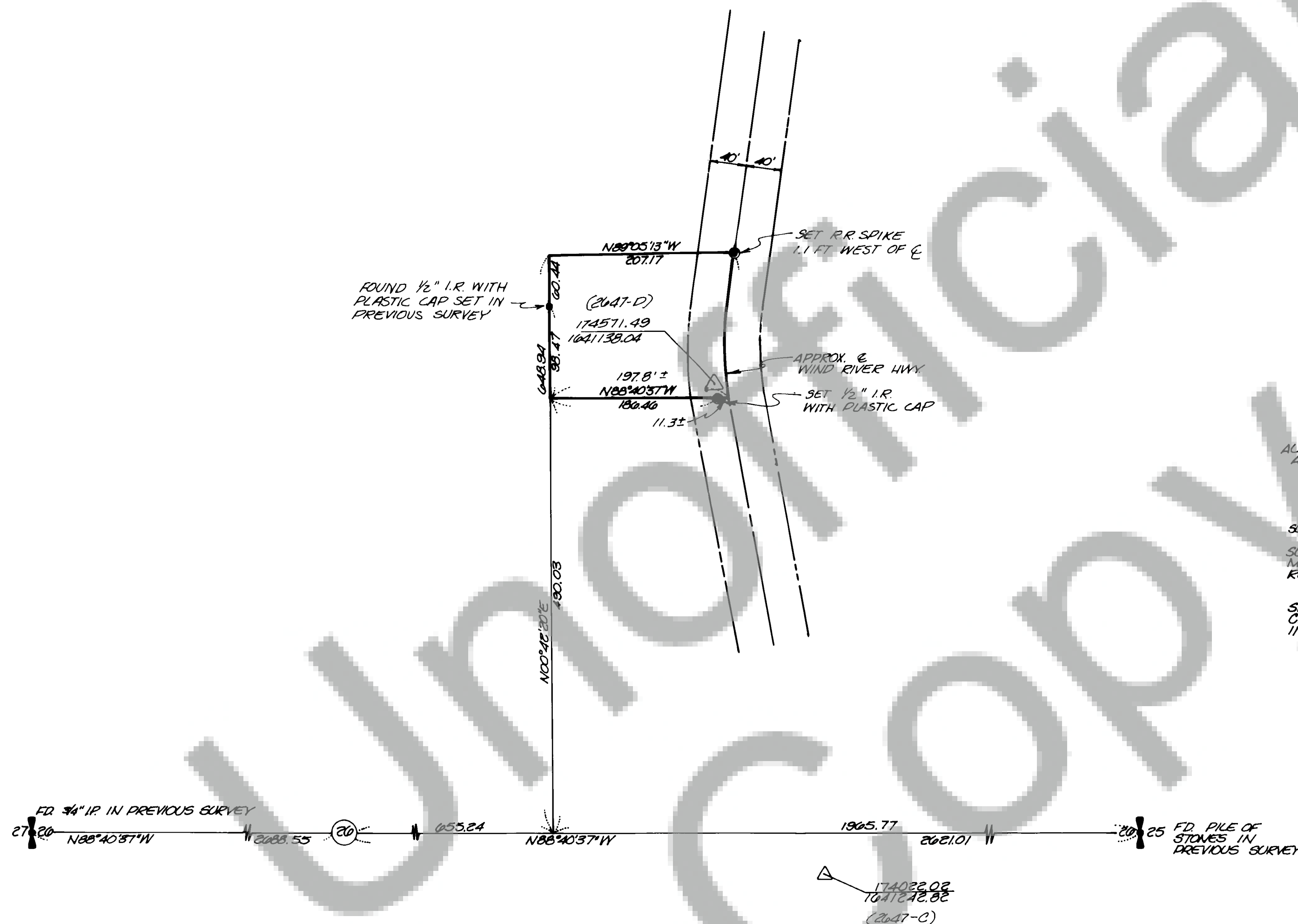


90058

BOOK 1 PAGE 207

SURVEY OF
A PORTION OF
SW 1/4, NE 1/4, SEC. 26,
T4N, R7E, WM.



ALL BEARINGS AND DISTANCES
ARE LAMBERT CONFORMAL
SOUTH ZONE

SURVEY REFERENCES:

SURVEY BY OLSON ENG. IN
MAY 1971 FOR JIM SWEIBERG,
RECORDED IN BOOK 1, PG. 130

SKAMANIA COUNTY COUNTY
CRP #74-20, BY OLSON ENG.
IN JUNE 1975.

SURVEYOR'S CERTIFICATE

This map correctly represents a survey made by me or under my direction in conform-
ance with the requirements of the Survey Recording Act at the request of
JIM SWEIBERG
in OCTOBER 1979

Jerry C. Olson
Jerry C. Olson - 9025

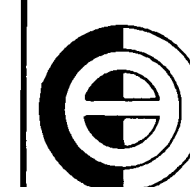
AUDITOR'S CERTIFICATE

Filed for record this 11th day of December 19 79 at 2:00 P.M.
in Book 1 of SURVEYS at page 207 at the request of
JERRY C. OLSON

H.P. Todd, B. Balcock, Deputy
Deputy County Auditor



12/11/79



OLSON ENGINEERING
1111 BROADWAY, VANCOUVER, WASH.
PH. (206) - 695-1385
1 KANAKA CR. RD., STEVENSON, WASH..
PH. (509) - 427-8411

Scale 1"=100' Date 10, 79
Job No 1504 Calc. By VGL
Drawn By SKB
Checked By _____
Sheet 1 of 1