

SURVEY

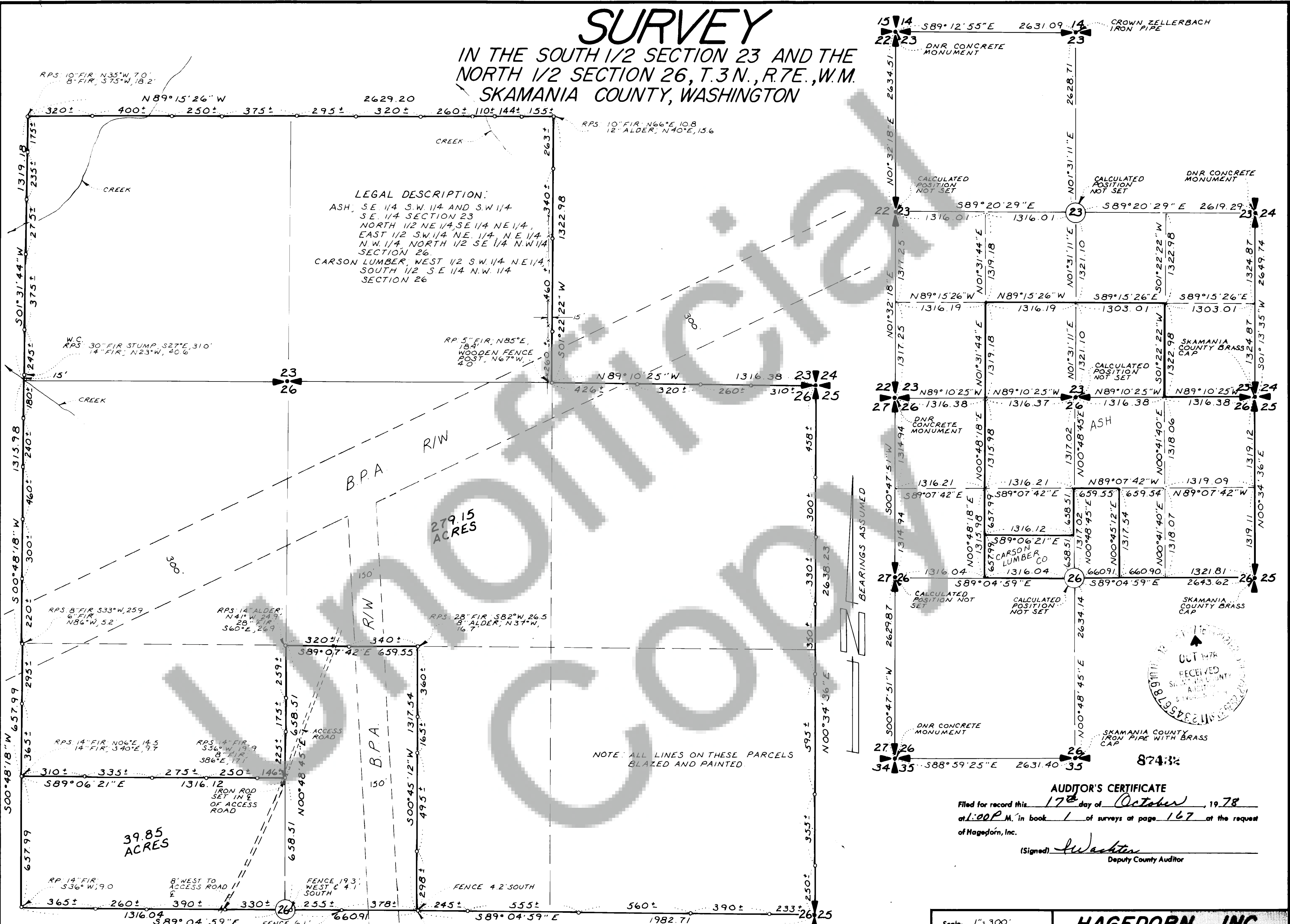
IN THE SOUTH 1/2 SECTION 23 AND THE NORTH 1/2 SECTION 26, T.3N., R.7E., W.M. SKAMANIA COUNTY, WASHINGTON

LEGAL DESCRIPTION:
 ASH, SE 1/4 S.W. 1/4 AND S.W. 1/4 SE 1/4 SECTION 23
 NORTH 1/2 NE 1/4, SE 1/4 NE 1/4, EAST 1/2 SW 1/4 NE 1/4, NE 1/4 N.W. 1/4, NORTH 1/2 SE 1/4 N.W. 1/4 SECTION 26
 CARSON LUMBER, WEST 1/2 S.W. 1/4 NE 1/4, SOUTH 1/2 SE 1/4 N.W. 1/4 SECTION 26

279.15 ACRES

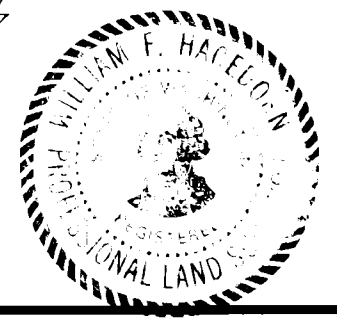
39.85 ACRES

NOTE: ALL LINES ON THESE PARCELS BLAZED AND PAINTED



Book 1 | Surveys Page 167

SURVEYOR'S CERTIFICATE
 THIS MAP CORRECTLY REPRESENTS A SURVEY MADE BY ME OR UNDER MY DIRECTION IN CONFORMANCE WITH THE REQUIREMENTS OF THE SURVEY RECORDING ACT AT THE REQUEST OF LOWELL ASH IN JUNE 1978.
 (SIGNED & SEALED) *William F. Hagedorn*
 REGISTERED LAND SURVEYOR
 CERTIFICATE NO. 9579



AUDITOR'S CERTIFICATE
 Filed for record this 17th day of October, 1978
 at 1:00 P.M. in book 1 of surveys at page 167 at the request of Hagedorn, Inc.
 (Signed) *W. W. Wacker*
 Deputy County Auditor

Scale: 1" = 300'
 Date: 9-5-78
 Job No. 78-159
 Calc. By: CEW
 Drawn By: RJP
 Checked By: B.C.M.
 Sheet 1 of 1

HAGEDORN, INC.
 1817 Main St. Vancouver, Wash.
 Ph. (206) 696-4428
LAND SURVEYORS
 Subdivisions, Boundaries, Control, Topography,
 Construction Surveys, & Road Layout