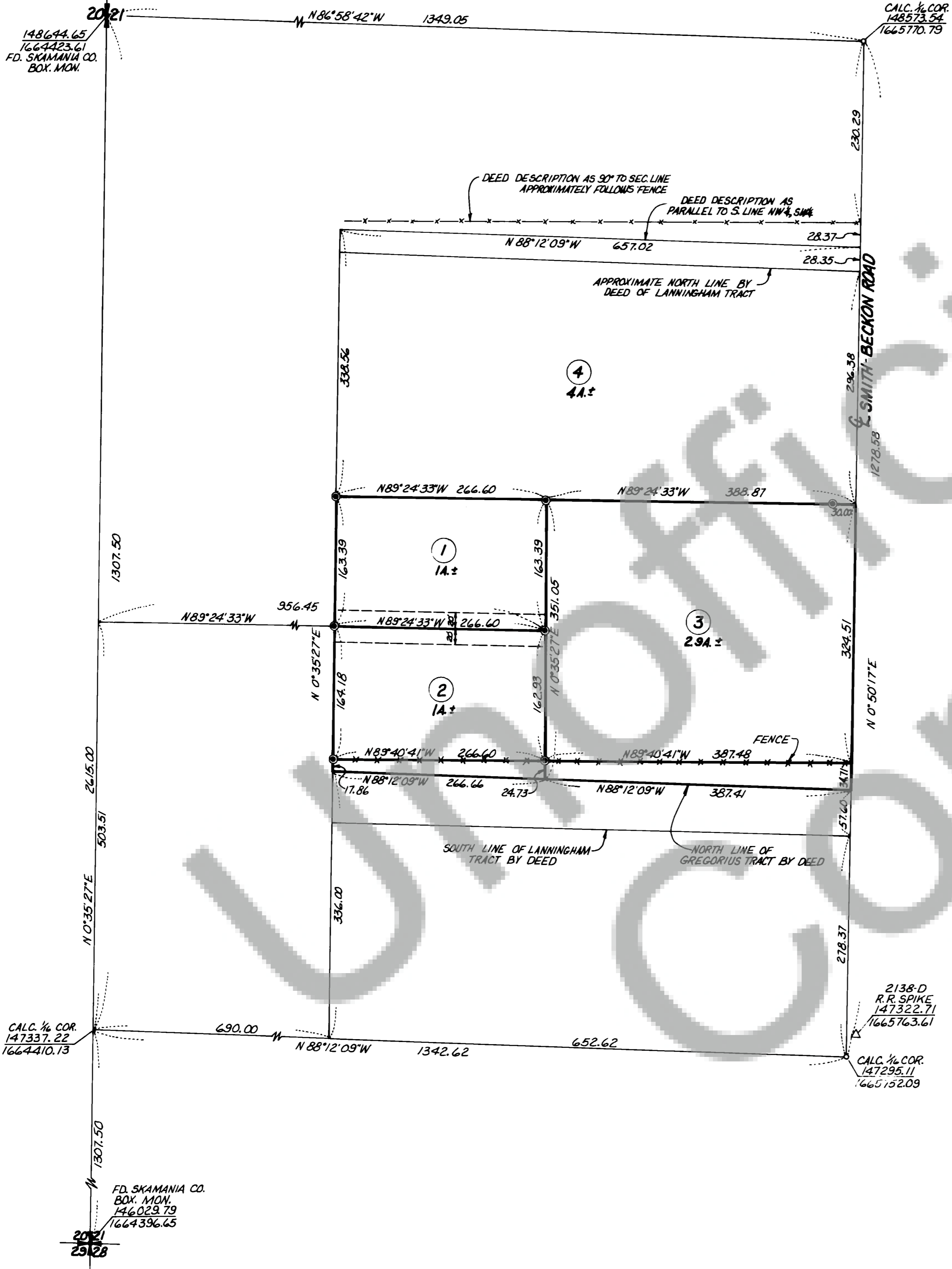
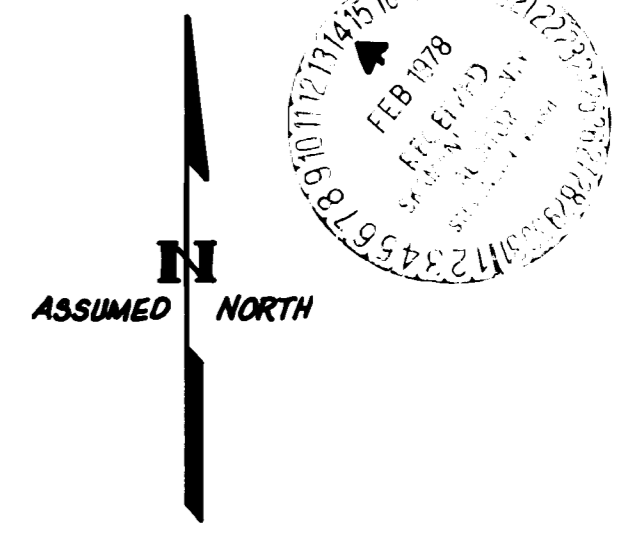


Book 1 Surveys Page 137



SURVEY OF
A PORTION OF
**NW 1/4, SW 1/4, SEC. 21,
T3N, R8E, WM**

© SET 1/2" I.R. WITH PLASTIC CAP



FOR SUBDIVISION OF SECTION SEE OLSON ENGINEERING SURVEY, SEC. 21, T3N, R8E-C.R.P. 74-26

SURVEYOR'S CERTIFICATE

This map correctly represents a survey made by me or under my direction in conformance with the requirements of the Survey Recording Act at the request of
WAYNE LANNINGHAM
in NOVEMBER 1977

Jerry C. Olson
Jerry C. Olson - 9025

AUDITOR'S CERTIFICATE

Filed for record this 14th day of February 1978 at 1:00 P.M.
in Book 1 of SURVEYS at page 137 at the request of
JERRY C. OLSON

J. Wachten
Deputy County Auditor

<p>OLSON ENGINEERING 112 E. 13 ST., VANCOUVER, WASH. PH. (206) - 695-1385 1 KANAKA CR. RD., STEVENSON, WASH. PH. (509) - 427-8411</p>	Scale <u>1"=100'</u> Date <u>1/17/78</u>
	Job No. <u>1834</u> Calc. By <u>WGL</u>
	Drawn By <u>cc</u> <u>187</u>
	Checked By <u> </u>
	Sheet <u> </u> of <u> </u>